



BY TEXTRON AVIATION

GRAND CARAVAN EX

---

## OPTIONAL EQUIPMENT SELECTION GUIDE



Note: Aircraft is shown with available options.

# OPTIONAL EQUIPMENT SELECTION GUIDE



EFFECTIVE FOR AIRCRAFT TO BE DELIVERED IN 2022

SEPTEMBER 2021

## INTRODUCTION

This list is to be used in conjunction with the applicable Specification and Description. Textron Aviation reserves the right to add, modify, or delete options without prior notification.

### NOTES:

#### 1. “Provisions Only” Statement of Understanding

At Purchaser’s request, Seller may agree to make provisions for a system in the Aircraft. Seller will do this in order to facilitate completion of the system at a time preferable for Purchaser subsequent to delivery.

Purchaser understands and agrees that Seller’s liability for any such provision is governed by the warranty. In addition, if Purchaser has the Aircraft modified to upgrade a provisional configuration to a fully functional configuration, Seller will warrant the functioning of the modified configuration if, and only if, the modification is accomplished at a factory-owned Textron Aviation service center.

Purchaser further understands that the provisions made are designed to accommodate a system as defined at present by Seller, and that Seller reserves the right to discontinue or change any system without notice. Accordingly, Purchaser acknowledges that the equipment required to render a provisional installation fully functional may not be available in the future and in such a case Seller bears no obligation to substitute for, remove, or complete the provisional installation.

2. Purchaser acknowledges that Seller assumes no responsibility or liability for equipment installed on the Aircraft in addition to the standard aircraft at a completion center other than the factory or authorized Citation Service Centers.

3. Optional equipment and vendors are subject to change without notice.

### DEFINITIONS:

1. STD = Standard equipment
2. N/C = No additional charge
3. #### = Factory kit number for optional equipment
4. TBD = To be defined
5. CRQ = Custom request
6. N/A = Not applicable

# AIRCRAFT PROFILE

## AIRCRAFT CERTIFICATION AND OPERATIONAL APPROVAL

**Aircraft Certification:** If the Purchaser elects to meet the certification criteria other than those required for U.S. FAA FAR 23—Normal category (day, night, VFR, IFR), compliance may necessitate airframe modifications and additional systems. Certification Kits are, or will be, available to meet the type design requirements set forth by the relevant civil aviation authority, at an additional charge.

**Aircraft Operating Approval:** The Purchaser is responsible for obtaining Aircraft operating approval from the relevant civil aviation authority. Additional equipment or airframe modifications, dependent upon the location and planned operations, may be identified by that authority (various regions within one country may have differing requirements).  
**International Certification:** The Purchaser must furnish to Textron Aviation the country of Aircraft

registration, a properly assigned or designated aircraft registration with the applicable Artex ELT and Mode S code identification, and any additional equipment or systems (if different from those mandated by the FAA for a similar operational category) required for the category of registration intended (e.g., private, commercial).

The Purchaser is responsible for added Aircraft modifications and associated expense to comply with operational requirements. International Certification Kit information is available upon request.

## AIRCRAFT EQUIPMENT REGISTRATION

The Purchaser must furnish to Textron Aviation from the relevant civil aviation authority, the binary code and country protocol for operation of the Artex ELT and the binary code for the Mode S Transponder.

Name: \_\_\_\_\_

Company: \_\_\_\_\_

Operator:  Corporate or  Private

Registration:  U.S. or  Other (specify): \_\_\_\_\_

Operation:  Commercial  Private  Fractional

Two Crew or  Single Pilot

Total passenger seats required for takeoff and landing: \_\_\_\_\_

Operating rules:  Part 91  Part 91K  Part 135  EU-OPS  Other (specify): \_\_\_\_\_

Region(s) of operation (check all that apply):

North America  South America  Europe  Middle East  Africa  Asia  Australia

Caribbean  Atlantic  Pacific

Other: \_\_\_\_\_

## AVIONICS

		Price (USD)	Estimated Weight (lb)	Warranty (Years)
<b>GARMIN G1000 NXI OPTIONS</b>				
□655B	<b>JEPPESEN CHART VIEW</b> ChartView resembles the paper version of domestic Jeppesen terminal procedures charts. The charts are displayed in full color with high-resolution. The MFD depiction shows the aircraft position on the moving map in the plan view of the approach charts and on airport diagrams. Available data includes domestic Arrivals (STAR), Departure Procedures (DP), Approaches, Airport Diagrams and NOTAMS. Requires Jeppesen Database Subscription Service.  Note: The availability of the optional Jeppesen ChartView or standard Garmin FliteCharts and SafeTaxi in electronic form does not preclude the requirement to carry paper charts aboard the aircraft. See AC 120-76A or later revision for more information.	\$6,650	0.0	5
□690K	<b>SYNTHETIC VISION TECHNOLOGY (SVT)</b> Position sensors on the aircraft integrate with a high resolution terrain database to present synthetic terrain imagery on the Primary Flight Display. Flight information is overlaid to provide greater situational awareness.	\$30,700	0.0	5
□624E	<b>ADS-B OUT AND IN FUNCTIONALITY W/ SINGLE GTX 345 TRANSPONDER</b> Replaces the standard GTX 335 transponder with a GTX 345 transponder to provide both ADS-B Out and In capability.	\$2,410	0.3	5
□624B	<b>GTX 335 TRANSPONDER, 2ND UNIT</b> Adds a second GTX 335 ADS-B Out capable transponder. Note: Can be combined with 624E to provide a GTX 345 / GTX 335 combination.	\$6,760	4.2	5
□675S	<b>GARMIN GSR-56 IRIDIUM SATELLITE DATA TRANSCEIVER LINK</b> With Garmin's Iridium Satellite Data Transceiver, pilots and passengers can access on-demand weather information, text communications and other data sharing capabilities in parts of the world not previously served by direct satellite data link services. Services including graphical radar imagery, METARs, TAFs, Weather Data and images are displayed on the G1000 NXi Flight Deck. Includes satellite phone capabilities along with two-way text messaging, which can send or receive text messages on the ground or in air. (Coverage subject to Iridium agreements with mobile service providers.) An Iridium service account and accompanying data/weather subscription plans are required.	\$21,830	3.4	5

Equipment supplied by the identified Supplier within a requested option will receive the limited warranty for the period specified in this Optional Equipment Selection Guide. All other associated components of the requested option (wiring, cables, racks, etc.), from other than the stated Supplier, will receive a limited warranty for a period of one year.

**NOTE: OPTIONAL EQUIPMENT AND VENDORS ARE SUBJECT TO CHANGE WITHOUT NOTICE.**

# AVIONICS

		Price (USD)	Estimated Weight (lb)	Warranty (Years)
<b>GENERAL AVIONICS</b>				
□668N	<b>KR 87 ADF (BENDIX/KING) DISPLAYED ON PFD W/STAND ALONE CONTROL</b> Displayed as a pointer on the HSI on the pilot’s and co-pilot’s PFD.	\$13,200	7.2	1
□673A	<b>KRA 405B RADAR ALTIMETER</b> Gives an absolute altitude indication from 2,500 to 0 feet AGL. Provides selection of warning altitude, and annunciation via both a decision height light (displayed on the pilot and co-pilot’s PFD) and an aural warning.	\$31,850	5.2	1
□632B	<b>KHF-1050 HIGH FREQUENCY TRANSCEIVER</b> The KHF-1050 High Frequency Transceiver includes a compact digital controller that provides advanced squelch features, enhanced channel storage, and quicker tuning.	\$97,220	45.1	1
□635S	<b>FA2100 CVDR</b> Includes L-3 Communications cockpit voice and data recorder. Installs combined 120-minute cockpit voice recorder and 25-hour flight data recorder.	\$106,630	23.6	5
<b>WEATHER, TRAFFIC AND TERRAIN AVOIDANCE SYSTEMS</b>				
□629W	<b>GARMIN GWX 75 – DIGITAL WEATHER RADAR WITH ENHANCED COLOR PALLET</b> The Garmin GWX 75 Digital Weather Radar includes an enhanced color palette that features more color contouring than the traditional four-color weather radar systems. Combines excellent range, Altitude Compensated Tilt (ACT) and adjustable scanning profiles with a high-definition target display. The Grand Caravan uses a 10-inch phased array antenna that is fully stabilized to accommodate 30 degrees of pitch and roll. Sector Scanning offers pilot-adjustable horizontal scan angles and a vertical scanning function helps to analyze storm tops, gradients, and cell build-up at various altitudes.	\$44,490	15.9	5
□630G	<b>TURBULENCE DETECTION &amp; GROUND CLUTTER SUPPRESSION</b> Adds the following features to the standard functions of the Garmin GWX 75 – Digital Weather Radar (FK629W): turbulence detection (to 40 nm) in rain cells, and ground clutter suppression.	\$22,050	0.0	5

Equipment supplied by the identified Supplier within a requested option will receive the limited warranty for the period specified in this Optional Equipment Selection Guide. All other associated components of the requested option (wiring, cables, racks, etc.), from other than the stated Supplier, will receive a limited warranty for a period of one year.

**NOTE: OPTIONAL EQUIPMENT AND VENDORS ARE SUBJECT TO CHANGE WITHOUT NOTICE.**

# GRAND CARAVAN EX

## AVIONICS

		Price (USD)	Estimated Weight (lb)	Warranty (Years)
□632K	<p><b>XM SATELLITE WEATHER/ENTERTAINMENT</b></p> <p>XM Satellite Weather data provides information for avoiding hazardous weather. Animated graphical weather information and associated text is received on the GDL 69A SXM remote-mounted data link satellite receiver and is displayed on the MFD and the PFD inset map. The GDL 69A SXM can also receive XM Satellite Radio entertainment services. Headsets are not included in this option. U.S. Customers Only. Requires Subscription Service.</p>	\$20,010	2.3	5
□614A	<p><b>SURFACE WATCH - GARMIN</b></p> <p>Provides additional aural and visual annunciations for improved aircraft position awareness during taxi, takeoff, and landing operations. Includes the capability for the crew to turn off aural alerts, if desired. (Basic SafeTaxi functionality, which includes detailed airport diagrams with runway/taxiway designation on the moving map, is standard).</p>	\$9,510	0.0	1
□629R	<p><b>EXTANT STORMSCOPE MODEL WX-500</b></p> <p>The WX-500 detects electrical discharges associated with thunderstorms within a 200 nm radius of the aircraft.</p>	\$13,230	4.9	5
□635M	<p><b>GARMIN GTS 825 TRAFFIC ADVISORY SYSTEM</b></p> <p>The GTS 825 actively interrogates other transponder-equipped aircraft and vocalizes for specific traffic-spotting information up to 75 targets and a 40nm interrogation range. Uses Garmin's exclusive CLEAR CAS technology. Meets FAA TSO C147 for traffic advisory systems. Note: If installed without 624E, the GTS 825 provides 1090 ES ADS-B In Traffic to the system.</p>	\$45,800	19.8	1
□650C	<p><b>TAWS-B GARMIN</b></p> <p>The Garmin TAWS (Terrain Awareness and Warning System) is an optional feature to increase situational awareness and aid in reducing controlled flight into terrain (CFIT). TAWS satisfies TSO-C151c Class B requirements for certification. TAWS provides visual and aural annunciations when terrain and obstacles are within the given altitude threshold from the aircraft. Class B TAWS is required for all Part 91 aircraft operations with six or more passenger seats and for Part 135 turbine aircraft operations with six to nine passenger seats (FAR Parts 91.223, 135.154).</p>	\$16,800	0.0	5

Equipment supplied by the identified Supplier within a requested option will receive the limited warranty for the period specified in this Optional Equipment Selection Guide. All other associated components of the requested option (wiring, cables, racks, etc.), from other than the stated Supplier, will receive a limited warranty for a period of one year.

**NOTE: OPTIONAL EQUIPMENT AND VENDORS ARE SUBJECT TO CHANGE WITHOUT NOTICE.**

# SYSTEMS AND EQUIPMENT

		Price (USD)	Estimated Weight (lb)	Warranty (Years)
□650D	<p><b>TAWS-A GARMIN</b></p> <p>The Class A TAWS provides visual and aural warning alerts for terrain avoidance. It supports Steep Approach functionality and six basic alert and warning modes such as excessive descent rate, altitude loss after takeoff , and inadvertent descent below glideslope. In addition, the Class A TAWS uses GPS input and a worldwide terrain database to display an enhanced graphical plan view of terrain, color coded in relation to the aircraft’s position. Terrain is shown in higher resolution around all runways longer than 2000 feet. Within North America and certain other areas, manmade obstacles greater than 100 feet are shown and included in the alert and warning modes. The Class A TAWS also includes a terrain clearance floor exceedance mode and a “look ahead” cautionary mode. Operators will be notified by Garmin of database updates as required. Note: This option can only be installed in conjunction with FK673A.</p>	\$27,420	0.0	5
□650G	<p><b>GARMIN ENHANCED AUTOMATIC FLIGHT CONTROL SYSTEM (E-AFCS)</b></p> <p>The E-AFCS, Enhanced Automatic Flight Control System, offers upgrades to the Automatic Flight Control System. The following features are added:</p> <ul style="list-style-type: none"> <li>· Electronic Stability and Protection (ESP)</li> <li>· Underspeed Protection (USP)</li> <li>· Emergency Descent Mode (EDM)</li> <li>· Auto-Level Function</li> <li>· Automatic Autopilot Activation</li> <li>· Expanded Engagement Envelope</li> <li>· Coupled Go-Around</li> </ul>	\$30,700	0.0	5
□175H	<p><b>C 406-N 3 FREQUENCY ELT (EXCHANGE)</b></p> <p>Replaces the standard ARTEX ELT 1000 2-frequency ELT. A three frequency ELT that transmits on the International Emergency Frequencies and the satellite frequency of 406 MHz. The ELT will transmit the aircraft information and position coordinates. Note: This system requires customer registration at time of delivery with NOAA for recognition of the 406 MHz transmission. May be required for country certification or operational requirements. Purchaser must furnish 24-bit code provided by registering country’s aviation authority.</p>	\$15,040	2.4	3

Equipment supplied by the identified Supplier within a requested option will receive the limited warranty for the period specified in this Optional Equipment Selection Guide. All other associated components of the requested option (wiring, cables, racks, etc.), from other than the stated Supplier, will receive a limited warranty for a period of one year.

**NOTE: OPTIONAL EQUIPMENT AND VENDORS ARE SUBJECT TO CHANGE WITHOUT NOTICE.**



## SYSTEMS AND EQUIPMENT

		Price (USD)	Estimated Weight (lb)	Warranty (Years)
<b>ELECTRICAL AND LIGHTING</b>				
□161G	<b>115 VAC POWER OUTLETS (4), CABIN</b> 500 watt inverter provides AC power to four outlets: one on each side of cabin just aft of crew doors and one on each side of cabin approximately mid length.	\$24,210	9.4	1
□16D	<b>300 AMP STARTER/GENERATOR (EXCHANGE)</b> Replaces the standard 200 amp starter/generator. A 28 volt, 300 amp engine-driven unit that functions as a motor for engine starting and after engine start, as a generator for the airplane electrical system.	\$7,880	10.5	1
<b>ENVIRONMENTAL</b>				
□02B	<b>AIR CONDITIONING, CABIN SYSTEM</b> This R-134A system is engine driven and includes two wing evaporators and one tailcone evaporator. Meets FAA & CAA Requirements.	\$51,530	116.7	1
□60D	<b>OXYGEN SYSTEM, COMPLETE 17 PORT SYSTEM</b> The system includes a 115 cu. ft. composite bottle, seventeen oxygen outlets and fourteen (14) partial rebreathing type oxygen masks. Two masks are equipped with a microphone for use by the crew.	\$22,640	37.3	1
<b>ICING EQUIPMENT</b>				
□22S/T	<b>TKS ANTI-ICE SYSTEM, CERTIFIED FOR FLIGHT IN ICING CONDITIONS - FOR AIRCRAFT WITH CARGO POD INSTALLED</b> The TKS anti-icing system incorporates porous panels attached to the exterior leading edge of the wings, wing struts, and empennage. The system contains a twenty gallon tank, two fluid pumps, windshield pump, timer/controller, filters, fluid level sensors, high pressure switch and low fluid level switch. These items are installed in Zone B of the cargo pod. A propeller slinger system provides protection for the propeller, windshield and cargo pod. For aircraft with cargo pod. (Weight does not include fluid @ 191.4 pounds). Option 06N (Cargo Pod Installation) is required as a prerequisite for this option. Note: Order FK22S if aircraft is not equipped with FK629W Weather Radar or, FK22T if equipped with FK629W Weather Radar.	\$135,290	106.9	1

Equipment supplied by the identified Supplier within a requested option will receive the limited warranty for the period specified in this Optional Equipment Selection Guide. All other associated components of the requested option (wiring, cables, racks, etc.), from other than the stated Supplier, will receive a limited warranty for a period of one year.

**NOTE: OPTIONAL EQUIPMENT AND VENDORS ARE SUBJECT TO CHANGE WITHOUT NOTICE.**

# SYSTEMS AND EQUIPMENT

		Price (USD)	Estimated Weight (lb)	Warranty (Years)
□22C/D	<p><b>TKS ANTI-ICE SYSTEM, CERTIFIED FOR FLIGHT IN ICING CONDITIONS - FOR AIRCRAFT WITHOUT CARGO POD INSTALLED</b></p> <p>The TKS anti-icing system incorporates porous panels attached to the exterior leading edge of the wings, wing struts, and empennage. The system contains a twenty gallon tank, two fluid pumps, windshield pump, timer/controller, filters, fluid level sensors, high pressure switch and low fluid level switch incorporated within an aerodynamic fairing on the bottom of the fuselage. A propeller slinger system provides protection for the propeller and windshield. For aircraft without cargo pod. (Weight does not include fluid @ 184 pounds). Note: Aircraft equipped with this option have a takeoff weight of 8750 lbs. Note: Order FK22C if aircraft is equipped with FK629W Weather Radar or, FK22D if not equipped with FK629W Weather Radar.</p>	\$144,830	137.4 139.0	1
<b>MISCELLANEOUS</b>				
□91S	<p><b>TIRES, 29" (EXCHANGE)</b></p> <p>Replaces standard main tires. Provides main tires 29.0 x 11-10, 10 ply exchange for 8.50 x 10, 8 ply.</p>	\$2,500	27.7	1
□02S	<p><b>CARGO DOOR REMOVED KIT</b></p> <p>The Cargo Door Removed Kit is designed for use during special purpose operations such as skydiving, aerial photography, emergency air drops, etc. This option consists of a vented spoiler installed on the forward cargo door hinges to minimize airflow buffeting within the cabin with the cargo doors removed. Considered carry-on baggage.</p>	\$2,480	0.1	2
□CRQ	<p><b>INBOARD FUEL FILLER (RECOMMENDED FOR FLOAT PLANES)</b></p> <p>Installs an additional fuel filler cap on inboard section of both left and right wings.</p>	\$5,800	3.7	1

Equipment supplied by the identified Supplier within a requested option will receive the limited warranty for the period specified in this Optional Equipment Selection Guide. All other associated components of the requested option (wiring, cables, racks, etc.), from other than the stated Supplier, will receive a limited warranty for a period of one year.

**NOTE: OPTIONAL EQUIPMENT AND VENDORS ARE SUBJECT TO CHANGE WITHOUT NOTICE.**

## SYSTEMS AND EQUIPMENT

		Price (USD)	Estimated Weight (lb)	Warranty (Years)
	<b>CARGO</b>			
□06W	<p><b>CARGO EQUIPMENT</b></p> <p><b>Includes the following:</b></p> <p><b>Cargo Barrier &amp; Close-Out Nets</b> The barrier and nets preclude loose cargo from moving forward into the pilot and front passenger stations during an abrupt deceleration.</p> <p><b>Cargo Tie-Down Fittings</b> Includes structural reinforcements and anchor plates mounted on the cabin sidewall and headliner at six stations. Used for securing cargo and baggage area partition nets. 100 lb. rating.</p> <p><b>Cargo Area Partition Nets (2)</b> The cargo area partition nets are constructed of canvas with nylon webbing reinforcement straps crisscrossing the partition for added strength. The ends of the straps have quick-release fasteners that attach to the floor tracks and to anchor plates located on the headliner and sidewalls. Four straps have adjustable buckles for tightening during installation of the partition.</p> <p><b>Window Protection Plugs</b> Provides removable inserts that protect the inside of all windows (except doors and windshield) during cargo hauling operations. Consists of one padded plug with handle, and three spring-clips mounted on the inside edge of each window.</p> <p><b>Gill Liner Interior</b> Replaces the standard cabin sidewalls and headliner. Provides a heavy-duty, durable surface for cargo-hauling use.</p> <p><b>Cargo Tie-Down Straps and Anchors, 5000 lb. Rating</b> Four each 144” straps having a 5,000 lb. tension rating and ratchet adjustment and eight each double-stud, quick-release tie-down anchors rated for restraining up to 300 lbs (with Cargo Barrier installed) when attached to the aft seat/cargo rails. Can also be used for tying down the airplane. Considered carry-on baggage.</p>	\$32,090	71.9	2
□CRQ	<p><b>PLYWOOD FLOOR</b></p> <p>Replaces floor access covers, and vinyl flooring, with lengths of 3/8” plywood cut to fit between the cabin area seat/cargo rails, aft of crew seats to aft bulkhead. Vinyl flooring and access covers remain in cockpit area.</p>	\$5,570	32.2	1

Equipment supplied by the identified Supplier within a requested option will receive the limited warranty for the period specified in this Optional Equipment Selection Guide. All other associated components of the requested option (wiring, cables, racks, etc.), from other than the stated Supplier, will receive a limited warranty for a period of one year.

**NOTE: OPTIONAL EQUIPMENT AND VENDORS ARE SUBJECT TO CHANGE WITHOUT NOTICE.**

# SYSTEMS AND EQUIPMENT

		Price (USD)	Estimated Weight (lb)	Warranty (Years)
□CRQ	<b>CARGO BARRIER PROVISIONS</b> Provisions for future installation of cargo barrier.	\$5,400	3.2	1
□06N	<b>CARGO POD INSTALLATION</b> The cargo pod provides additional cargo and baggage space. The volume of the cargo pod is 111.5 cubic feet, has a maximum load-carrying weight of 1,090 lb. and a maximum floor loading of 30 lb. per square foot. The pod is divided into four compartments separated by aluminum bulkheads and each compartment has an individual lockable loading door. Also includes an Aero Twin exhaust deflector, which has a U.S. STC and deflects hot gases away from the cargo pod. International customers require verification of approval of STC.	\$95,290	196.0	2
	<b>FOREIGN CERTIFICATION</b>			
□29	<b>DATA PLATE INSTALLATION FOR FOREIGN CERTIFICATION</b> Installs a fireproof stainless steel ID plate. ID plate includes aircraft nationality code and registration.	N/C		
□188S	<b>PROVIDE EXPORT CERTIFICATE OF AIRWORTHINESS</b> Provides a United States Export Certificate of Airworthiness for operations of the Aircraft in the country of owner in the Private or Public Transportation category. Textron Aviation reserves the right to provide a customized placard solution to accommodate intended timeframe as needed. Buyer shall be responsible for all cost associated with registering the Aircraft in the country of owner. Customer must identify which Country the aircraft will be registered in.	\$12,570	TBD	TBD

Equipment supplied by the identified Supplier within a requested option will receive the limited warranty for the period specified in this Optional Equipment Selection Guide. All other associated components of the requested option (wiring, cables, racks, etc.), from other than the stated Supplier, will receive a limited warranty for a period of one year.

**NOTE: OPTIONAL EQUIPMENT AND VENDORS ARE SUBJECT TO CHANGE WITHOUT NOTICE.**

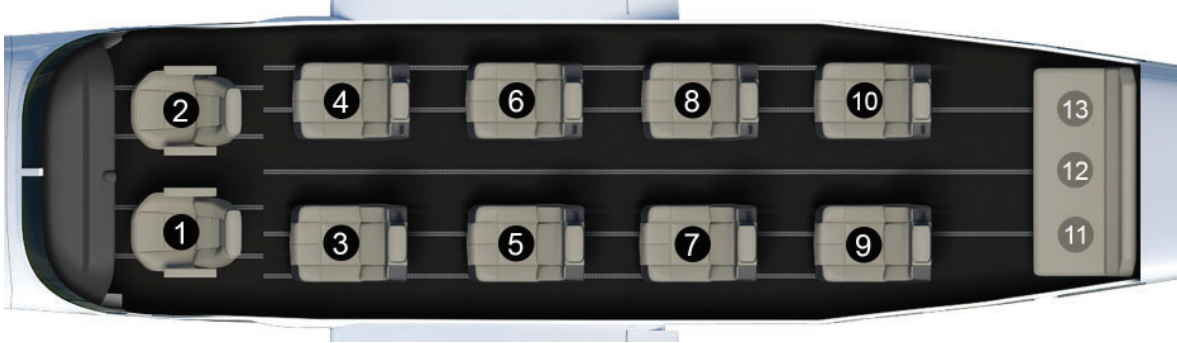
# FLIGHT DECK



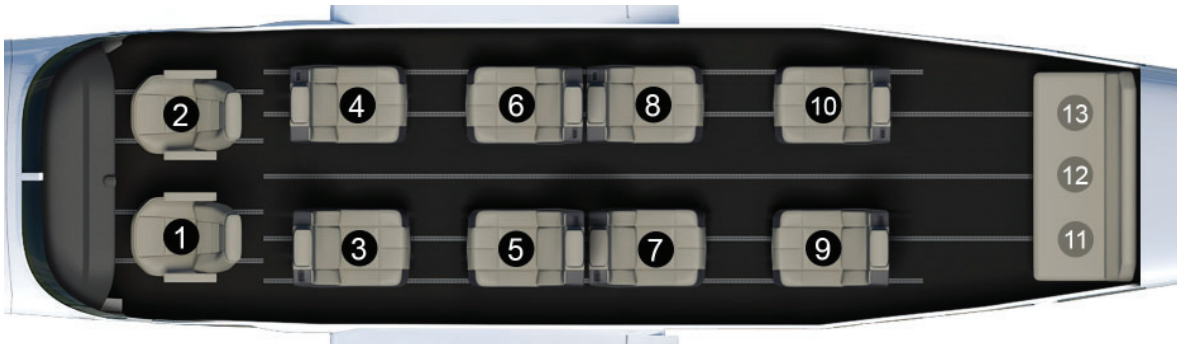
# INTERIOR

## CABIN CONFIGURATION

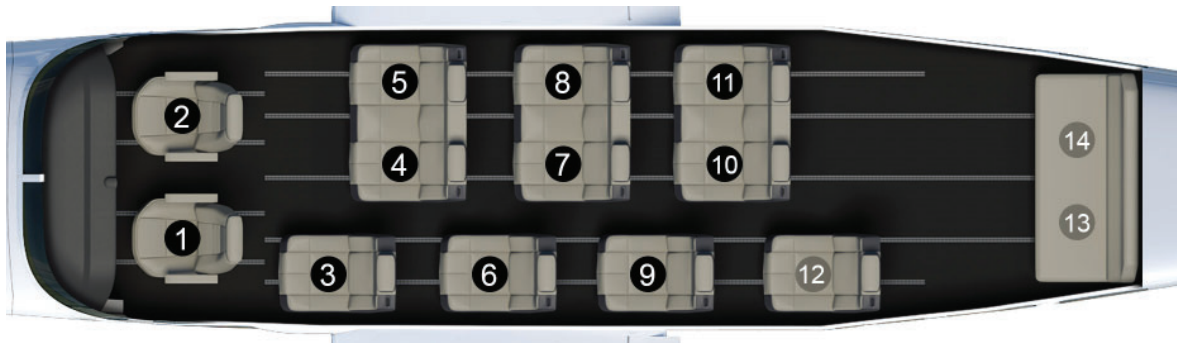
### 10 OR 13 PLACE COMMUTER SEATING



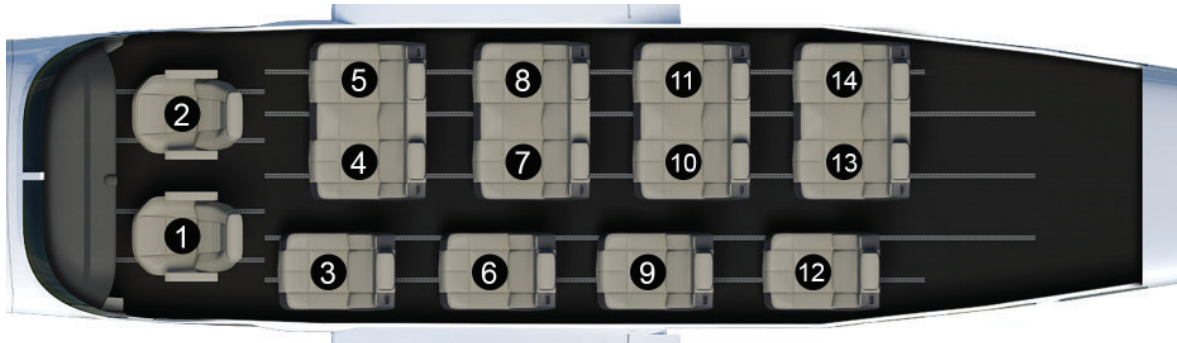
### 10 OR 13 PLACE CLUB SEATING



### 11 OR 14 PLACE COMMUTER SEATING



### 14 PLACE COMMUTER SEATING





## INTERIOR

**Note:** In accordance with FAR Part 23, rear facing seats must have a headrest installed.

**Note:** In accordance with FAR Part 23, maximum seating is limited to nine passenger seats and required crew. Operations with more than 11 seats requires a FAR Part 23 nine passenger limit waiver from the Department of Civil Aviation of the country in which the aircraft is to be operated. Maximum seating with a FAR Part 23 nine passenger limit waiver is 14. If said waiver is not obtained and supplied to Textron Aviation prior to aircraft delivery, only the two crew seats and up to nine passenger seats will be installed by Textron Aviation. The balance of the passenger seats will be strapped down in aircraft as loose equipment and must be installed by the customer.

**Note:** In accordance with FAR 91.223 turbine-powered U.S. registered airplanes configured with six or more passenger seats, excluding any pilot seat, must be equipped with an approved terrain awareness and warning system that as a minimum meets the requirements for Class B equipment in Technical Standard Order (TSO)-C151.

**Note:** In accordance with FAR 135.154 two turbine-powered airplanes configured with six to nine passenger seats, excluding any pilot seat must be equipped with an approved terrain awareness and warning system that meets as a minimum the requirements for Class B equipment in Technical Standard Order (TSO)-C151.

### CABIN CONFIGURATION

		Price (USD)	Estimated Weight (lb)	Warranty (Years)
☐113VSW	<b>10-PLACE COMMUTER</b> Two crew seats are included with standard aircraft. This option adds eight single passenger seats installed in forward facing configuration (does not include headrests). Note: Passenger headrests are available for additional charge, and must be ordered separately with FK141A8.	\$63,210	200.8	1
☐113T	<b>10-PLACE COMMUTER CLUB</b> Two crew seats are included with standard aircraft. This option adds eight single passenger seats, (including headrests), installed in a double club configuration.	\$72,480	209.4	1
☐113Y	<b>11-PLACE COMMUTER</b> Two crew seats are included with standard aircraft. This option adds three double passenger seats, installed forward facing on right side of aircraft and three single passenger seats installed forward facing on left side of aircraft (does not include headrests). Note: Passenger headrests are available for additional charge, and must be ordered separately with FK141A9.	\$66,690	214.2	1
☐113WSW	<b>13-PLACE COMMUTER EXPORT ONLY</b> Two crew seats are included with standard aircraft. This option adds eight single passenger seats (without headrests), installed in forward facing configuration, with a three-place aft couch. Note: Passenger headrests are available for additional charge, and must be ordered separately with FK141A8. Not compatible with aircraft operated on U.S. Registry and requires verification with certification authority for registering country.	\$77,690	237.2	1

**NOTE: OPTIONAL EQUIPMENT AND VENDORS ARE SUBJECT TO CHANGE WITHOUT NOTICE.**

# INTERIOR

□113U	<p><b>13-PLACE COMMUTER CLUB EXPORT ONLY</b></p> <p>Two crew seats are included with the standard aircraft. This option adds eight single passenger seats (including headrests), installed in a double club configuration, and three-place aft couch. Not compatible with aircraft operated on U.S. Registry and requires verification with certification authority for registering country.</p>	\$86,960	245.9	1
□113K	<p><b>14-PLACE COMMUTER EXPORT ONLY</b></p> <p>Two crew seats are included with standard aircraft. This option adds four double passenger seats, installed forward facing on right side of aircraft and four single passenger seats installed forward facing on left side of aircraft (does not include headrests). Note: Passenger headrests are available for additional charge, and must be ordered separately with FK141A12. Not compatible with aircraft operated on U.S. Registry and requires verification with certification authority for registering country.</p>	\$88,920	285.6	1
□113F	<p><b>14-PLACE COMMUTER EXPORT ONLY</b></p> <p>Two crew seats are included with standard aircraft. This option adds three double passenger seats, installed forward facing on right side of aircraft and four single passenger seats installed forward facing on left side of aircraft (does not include headrests) and a two-place aft couch. Note: Passenger headrests are available for additional charge, and must be ordered separately with FK141A10. Not compatible with aircraft operated on U.S. Registry and requires verification with certification authority for registering country.</p>	\$88,490	274.2	1
□CRQ	<p><b>PROVISIONS FOR EASA HIGH DENSITY PASSENGER SEATING</b></p> <p>Installs operational equipment required for installation of more than nine passenger seats in EASA registered aircraft. This provision kit does not include any passenger seats.</p>	\$21,080	TBD	1
<b>PASSENGER SEAT HEADREST OPTIONS</b>				
□141A8	Includes 8 headrests installed on passenger seats.	\$9,270	8.6	1
□141A9	Includes 9 headrests installed on passenger seats.	\$10,430	9.7	1
□141A10	Includes 10 headrests installed on passenger seats.	\$11,590	10.8	1
□141A12	Includes 12 headrests installed on passenger seats.	\$13,900	13.0	1

**NOTE: OPTIONAL EQUIPMENT AND VENDORS ARE SUBJECT TO CHANGE WITHOUT NOTICE.**



# GRAND CARAVAN EX

## INTERIOR

INTERIOR STYLING – AVAILABLE IN CANYON AND SAVANNA COLOR GROUPINGS. SEE INTERIOR SELECTION GUIDE FOR COLOR AND FABRIC SELECTION.

CANYON



SAVANNA



Floor Covering



Standard

Sidewall



Standard Vinyl



Optional Fabric

Seats



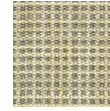
Standard

Floor Covering



Standard

Sidewall



Standard Vinyl



Optional Fabric

Seats



Standard

### CANYON OR SAVANNA GROUPS

#### SEATS

- Standard Durable Luxury Covering (Leather-Like)
- Alternate Leather

Price (USD)	Estimated Weight (lb)	Warranty (Years)
N/C	0	1
\$18,710	10-15	1

#### SIDEWALL

- Standard Vinyl
- Alternate Fabric

Price (USD)	Estimated Weight (lb)	Warranty (Years)
N/C	0	1
\$2,700	TBD	1

#### FLOOR COVERING

- Standard Vinyl

Price (USD)	Estimated Weight (lb)	Warranty (Years)
N/C	0	1

NOTE: OPTIONAL EQUIPMENT AND VENDORS ARE SUBJECT TO CHANGE WITHOUT NOTICE.

# OTHER OPTIONS

- **WIPAIRE AURORA INTERIOR INFORMATION:**  
Please contact your sales representative to get details on pricing, definition, lead-times and scheduling.
  
- **WIPAIRE SINGLE POINT REFUELING INFORMATION:**  
Please contact your sales representative to get details on pricing, definition, lead-times and scheduling.
  
- **WIPAIRE FLOATPLANE INFORMATION:**  
Please contact your sales representative to get details on pricing, definition, lead-times and scheduling.
  
- **YINGLING OASIS INTERIOR INFORMATION:**  
Please contact your sales representative to get details on pricing, definition, lead-times and scheduling.

**NOTE: OPTIONAL EQUIPMENT AND VENDORS ARE SUBJECT TO CHANGE WITHOUT NOTICE.**

## EXTERIOR

Price  
(USD)

□580T **PERMAGARD COATING ON RIGHT HAND CARGO POD & STRUT** \$4,790

A protective coating applied to the right hand side of the cargo pod and right main landing gear strut to facilitate cleaning of soot. Note: Not applicable for aircraft painted with semi-gloss or flat paint.

### PAINT

Textron Aviation strives to select and use high quality polyurethane paints from the leading manufacturers. Polyurethane paints are used because of their high gloss characteristics and ability to withstand dramatic temperature and pressure changes. The paint will maintain its high gloss characteristics for an extended period of time provided it is cared for properly.

Paint warranty applies only to defect in material and workmanship for a period of one year. Paint deterioration due to normal wear, exposure, or improper care is not covered by the warranty.

Paint associated with amphibious floats is applied and warranted by Wipaire, Inc.

### PAINT DESIGN

Customers may choose a standard scheme or a custom stripe design. The cost of custom designs is dependent on the complexity of the design, use of special paint, number of colors, and logos.

Paint definition required concurrently with other aircraft specifications.

The use of multi-color fades or blends is not available.

The use of metallic paint on the radar dome or as an overall base coat is not available.

### PAINT COLORS

Contact Contract Administration for paint brochures.

Matterhorn White is the standard base color.

Please select stripe colors from the Axalta Aviation Color Selector.

Axalta AF700 is the standard paint used on stripe designs.

### REGISTRATION

Styling, color, and placement of the aircraft registration is restricted by the regulations of the country in which the aircraft will be registered. Styling options available, if allowed, include rounded vertical block, 30-degree slant, and shadows.

**NOTE: OPTIONAL EQUIPMENT AND VENDORS ARE SUBJECT TO CHANGE WITHOUT NOTICE.**

# EXTERIOR

Price  
(USD)

Stripe 2001

N/C



Stripe 2002

N/C



Stripe 2003

N/C



**NOTE: OPTIONAL EQUIPMENT AND VENDORS ARE SUBJECT TO CHANGE WITHOUT NOTICE.**

September 2021  
For Aircraft to be Delivered in 2022

# GRAND CARAVAN EX

## EXTERIOR

Price  
(USD)

Stripe 2004

N/C



Stripe 2005

N/C



Stripe 2006

N/C



NOTE: OPTIONAL EQUIPMENT AND VENDORS ARE SUBJECT TO CHANGE WITHOUT NOTICE.

# EXTERIOR

Price  
(USD)

Stripe 2007

N/C



Stripe 2008

N/C



Stripe 2009

N/C



**NOTE: OPTIONAL EQUIPMENT AND VENDORS ARE SUBJECT TO CHANGE WITHOUT NOTICE.**

September 2021  
For Aircraft to be Delivered in 2022



# GRAND CARAVAN EX

## EXTERIOR

Price  
(USD)

Stripe 2010



N/C

Stripe 2011



N/C

Stripe 2012



N/C

NOTE: OPTIONAL EQUIPMENT AND VENDORS ARE SUBJECT TO CHANGE WITHOUT NOTICE.

# EXTERIOR

Price  
(USD)

Stripe 2013



N/C

Stripe 2014



N/C

Stripe 2015



N/C

**NOTE: OPTIONAL EQUIPMENT AND VENDORS ARE SUBJECT TO CHANGE WITHOUT NOTICE.**

September 2021  
For Aircraft to be Delivered in 2022



# GRAND CARAVAN EX

## EXTERIOR

Price  
(USD)

Stripe 2016



N/C

Stripe 2017



N/C

Stripe 2018



N/C

NOTE: OPTIONAL EQUIPMENT AND VENDORS ARE SUBJECT TO CHANGE WITHOUT NOTICE.



---

BY TEXTRON AVIATION

U.S. +1.844.44.TXTAV | INTERNATIONAL +1.316.517.8270 | [TXTAV.COM](http://TXTAV.COM)

© 2021 **Textron Aviation Inc.** All rights reserved. Product names, company names, trademarks, service marks, trade names, trademark designs and logos of Textron Aviation Inc. or its subsidiaries (collectively "Marks"), whether or not appearing in large print, italics, or with trade marking symbols, are Marks of Textron Aviation Inc. or an affiliate and may be registered in the United States. Third party marks whether or not appearing in large print, italics, or with trade marking symbols are marks of others.

September 2021  
OESG-TBP-208B-0921